



BLDC-PCBA

深圳市英飞尔电子有限公司

SHENZHEN INFELL ELECTRONICS CO., LTD.

SCIENCE-2009

WELCOME TO SHENZHEN INFELL ELECTRONICS CO., LTD

Founded in 2009, Shenzhen Infell Electronics Co., Ltd is a leader in the innovation and manufacturing of high-quality home appliance controllers and consumer electronics.

With a strong focus on research and development, our expert team is dedicated to delivering cutting-edge solutions that meet the evolving needs of our customers across the globe. From advanced BLDC fan controllers to smart IoT-enabled devices, we pride ourselves on offering products that combine reliability, efficiency, and modern technology.

At Shenzhen Infell, we are committed to excellence in every aspect of our business—from design and production to customer service. Thank you for choosing us as your trusted partner in technology.



TABLE OF **CONTENT**

- About Company
- Welcome Message
- Our Vision
- Our Mission
- Our Service
- PCBA
- REMOTE
- Meet Our Team
- Get In Touch



ABOUT SHENZHEN INFELL ELECTRONICS CO., LTD

Founded in 2009, Shenzhen Infell Electronics Co., Ltd is a leader in the development and manufacturing of home appliance controllers and consumer electronics, Mainly Focused on PCBA & Remote. Based in Shenzhen, China, we specialize in producing advanced products such as BLDC fan controllers, air-cooler controllers, PCBAs, Washing Machine and smart remote controls.

Our Expertise With a dedicated R&D team of nearly 20 engineers, many of whom are graduates from top universities and have over a decade of experience, we have developed more than 10 patents. These innovations drive our product development, ensuring that we stay at the forefront of technological advancements.

Product Certifications We are committed to maintaining the highest standards of quality and safety. Our products are certified with international standards, including CB, CCC, CE, FC, ISO9001, IC, RoHS, SAA, RL, and ELT. These certifications reflect our dedication to delivering reliable, high-quality products that meet global regulatory requirements.

State-of-the-Art Manufacturing Our 3,000 square meter facility in the Bao'an District of Shenzhen is equipped with 8 SMT lines, capable of producing 5 million points daily. We operate under ISO9001 standards, ensuring that our quality management system is rigorous and effective.

Global Reach We design our products with a global market in mind, focusing on regions such as USA, Europe, Australia, Canada, UK, Singapore, Malaysia, Vietnam, Africa, Pakistan Bangladesh & India. Our solutions are tailored to provide maximum value, efficiency, and performance, helping us earn a strong reputation worldwide.

Commitment to Quality At Shenzhen Infell Electronics, quality is at the heart of everything we do. From rigorous R&D processes to meticulous manufacturing, we ensure that every product meets the highest standards of quality and reliability.



WELCOME MESSAGE

Dear Valued Customers and Partners,

Welcome to Shenzhen Infell Electronics Co., Ltd!

It is my great pleasure to introduce you to our company, a place where innovation meets excellence. Since our founding in 2009, we have been committed to delivering high-quality, cutting-edge solutions in the field of home appliance controllers and consumer electronics. Our journey has been guided by a passion for technology and a deep commitment to our customers.

At Shenzhen Infell Electronics, we believe in the power of collaboration and continuous improvement. Our talented team, equipped with advanced knowledge and a dedication to innovation, works tirelessly to ensure that we not only meet but exceed your expectations. Whether you are looking for the latest in BLDC fan controllers, air-cooler solutions, or smart IoT devices, we are here to provide you with products that are reliable, efficient, and tailored to your needs.

We are proud to serve customers across the globe, particularly in dynamic markets such as USA, Europe, Australia, Canada, UK, Singapore, Malaysia, Vietnam, Africa, Bangladesh, India & Pakistan. Your trust and support have been instrumental in our growth, and we are committed to continuing to earn your confidence with every product we create.

Thank you for choosing Shenzhen Infell Electronics as your partner in technology. We look forward to building a prosperous future together.

Warm regards,

英飞尔
Schwang
CEO
Shenzhen Infell Electronics Co., Ltd



OUR VISION

VISION 01

To be a global leader in the development and manufacturing of innovative home appliance controllers and consumer electronics, driving technological advancements that enhance the quality of life for people around the world.

VISION 02

To empower customers with cutting-edge, energy-efficient solutions that seamlessly integrate into smart homes, setting new standards in reliability, sustainability, and customer satisfaction.



OUR MISSION

MISSION

Our mission is to design, develop, and deliver high-quality, energy-efficient electronic solutions that enhance the functionality and reliability of home appliances. We are committed to innovation, excellence, and sustainability, striving to exceed customer expectations by providing customized, cutting-edge products that improve everyday life and contribute to a smarter, more connected world.





OUR PRODUCT & SERVICE

HIGH QUALITY AC/DC BLDC FAN CONTROLLER

Model No: FD-6316G



Power Supply Spec:

Input Voltage: 220V-260V
 Motor Output Power: 38-40W.
 LED Drive Voltage : 36-40V(DC)
 LED Output Power: 24-28W
 Control Mode: 2.4G
 Power Supply Efficiency:>85%

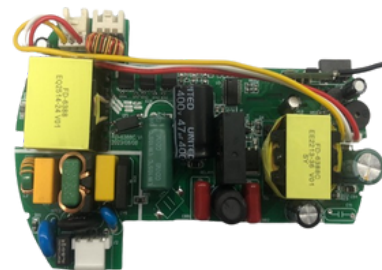
Model No: FD-6321



Power Supply Spec:

Input Voltage: 230V-265V
 Drive Voltage: 24V-28V(DC)
 Output Power: 35-40W.
 Surge: 4k
 Control Mode: RF433
 Power Supply Efficiency:>85%

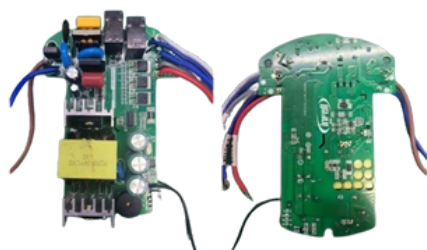
Model No: FD-6388



Power Supply Spec:

Input Voltage: 220V-240V
 Motor Output Power: 30-40W.
 LED Drive Voltage : 36-37V(DC)
 LED Output Power: 18-20W
 Drive Mode: FOC driven
 Power Supply Efficiency:>85%

Model No: FD-6346



Power Supply Spec:

Input Voltage: 220V-265V
 Drive Voltage: 24V-28V(DC)
 Output Power: 60-65W.
 Drive mode: FOC Driven
 Control Mode: IR or RF433
 Power Supply Efficiency:>85%

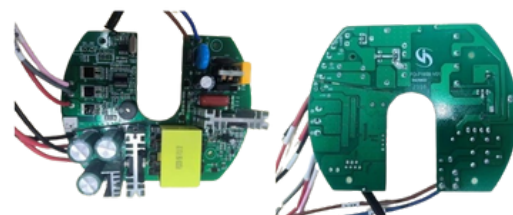
Model No: FD-6398



Power Supply Spec:

Input Voltage: 220V-260V
 Motor Drive Voltage: 12V-28V(DC)
 Motor Output Power: 100-130W.
 Drive mode: FOC Driven
 Control Mode: Knob well or RF433
 Power Supply Efficiency:>85%

Model No: FD-7185B



Power Supply Spec:

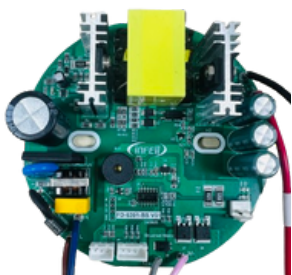
Input Voltage: 220V-265V
 Drive Voltage: 12V-28V(DC)
 Output Power: 60-65W.
 Drive mode: FOC Driven
 Control Mode: IR or RF433
 Power Supply Efficiency:>85%



OUR PRODUCT & SERVICE

HIGH QUALITY AC/DC BLDC FAN CONTROLLER

Model No: FD-6391



Power Supply Spec: !!

Input Voltage: 220V-265V
Drive Voltage: 12V-28V(DC)
Output Power: 60-65W.
Drive mode: FOC Driven
Control Mode: IR or RF433
Power Supply Efficiency:>85%

Model No: FD-6397



Power Supply Spec:

Input Voltage: 220V-260V
Motor Drive Voltage: 12V-28V(DC)
Motor Output Power: 100-130W.
Drive mode: FOC Driven
Water Pump drive motor O:15-20W
Power Supply Efficiency:>85%

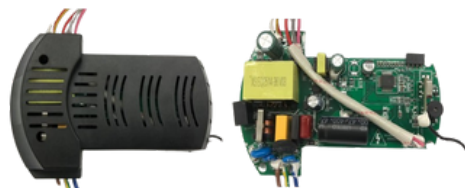
Model No: FD-7188C



Power Supply Spec: !!

Input Voltage: 220V-265V
Drive Voltage: 12V-28V(DC)
Output Power: 60-65W.
Drive mode: FOC Driven
Control Mode: IR or RF433
Power Supply Efficiency:>85%

Model No: FG-6890



Power Supply Spec:

Input Voltage: 220V-240V
Motor Output Power: 38-45W.
LED Drive Voltage : 36-40V(DC)
LED Output Power: 18-30W
Control Mode: WIFI, RF433
Power Supply Efficiency:>85%

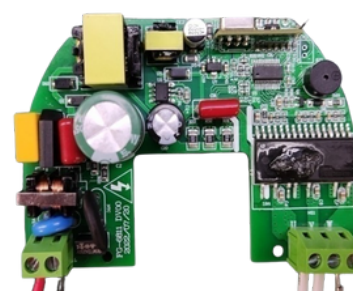
Model No: FE-7161L



Power Supply Spec:

Input Voltage: 220V-265V
Drive Voltage: 12V-28V(DC)
Output Power: 60-65W.
Drive mode: FOC Driven
Control Mode: IR or RF433
Power Supply Efficiency:>85%

Model No: FG-6811



Power Supply Spec:

Input Voltage: 230V-2640V
Motor Output Power: 38-40W.
Motor Drive Voltage : 400-410V(DC)
Control Mode: IR or RF433
Power Supply Efficiency:>85%



OUR PRODUCT & SERVICE

HIGH QUALITY REMOTE FOR FAN & LIGHT CONTROL



YKRF000S



YKRF0083



YKRF0082



YKIR0021



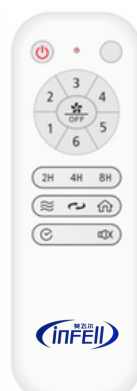
YKIR0023



YKEF0067



YKRF0064



YKRF0026



YKRF0087



YKIR0025



YKRF0003



YKRF0086



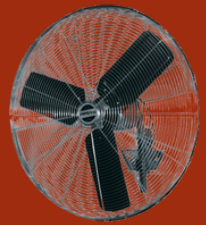
YKRF0093



YKRF0106



YKRF0096



MEET OUR TEAM

LISA

Lisa leads our sales team with expertise and dedication, consistently driving results at Shenzhen Infell Electronics Co., Ltd. With a deep understanding of market trends and a knack for building strong client relationships, she ensures our sales targets are not just met but exceeded. Known for her leadership and commitment to excellence, Lisa is a key player in our continued growth and success.



Sarena

Sarena is a dynamic Sales Executive at Shenzhen Infell Electronics Co., Ltd, known for her customer-focused approach and dedication to driving sales. With a keen eye for detail and a passion for building strong client relationships, Sarena plays a crucial role in helping our team achieve its goals. Her enthusiasm and commitment to delivering excellent service make her a valuable asset to both our team and our clients.



MD ASIF KARIM

Md Asif Karim brings a wealth of expertise and dedication to his role as the Sales and Marketing Manager at Shenzhen Infell Electronics Co., Ltd. With a strategic mindset and a passion for driving growth, Asif has been instrumental in expanding the company's market presence and forging strong relationships with clients worldwide.

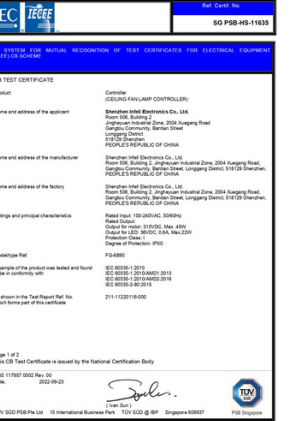
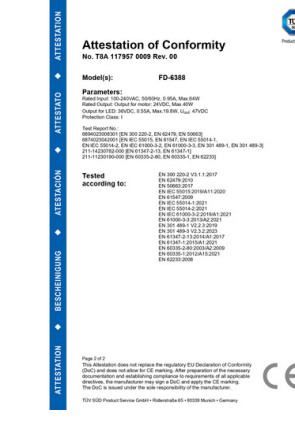
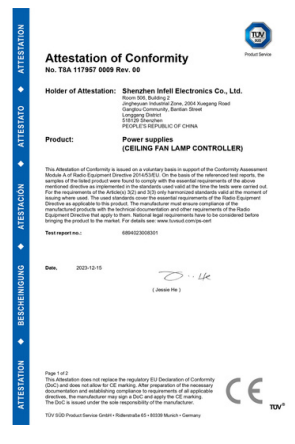


MangHao

MangHao is the backbone of our team at Shenzhen Infell Electronics Co., Ltd, providing essential support as our Business Assistant. With exceptional organizational skills and a proactive approach, MangHao ensures that our operations run smoothly and efficiently. His attention to detail and dedication to the team make him an invaluable resource, helping to streamline processes and support the success of our sales efforts.



CERTIFICATION





GET IN TOUCH

At Shenzhen Infell Electronics Co., Ltd, we're more than just a technology provider—we're your trusted partner in innovation. Our dedicated team is here to assist you with personalized solutions, ensuring that our products perfectly match your needs. Whether you have questions, need expert advice, or are ready to make a purchase, we're always here to help.

WHY PURCHASE FROM US?

When you choose Shenzhen Infell Electronics, you're investing in quality, reliability, and cutting-edge technology. Our products are designed with the highest standards in mind, offering energy efficiency, durability, and top-notch performance. Experience the difference with our customized solutions and enjoy the peace of mind that comes with knowing you've chosen the best in the industry.



CONTACT US:



+86-191 5492 8495



www.infell.com



shenzheninfellelectronics@gmail.com



The 3rd floor, Building 2, Jingheyuan Industrial zone, 2004 Xuegang Road, Gangtou Community, Bantian Street, Longgang District.



WeChat



WhatsApp